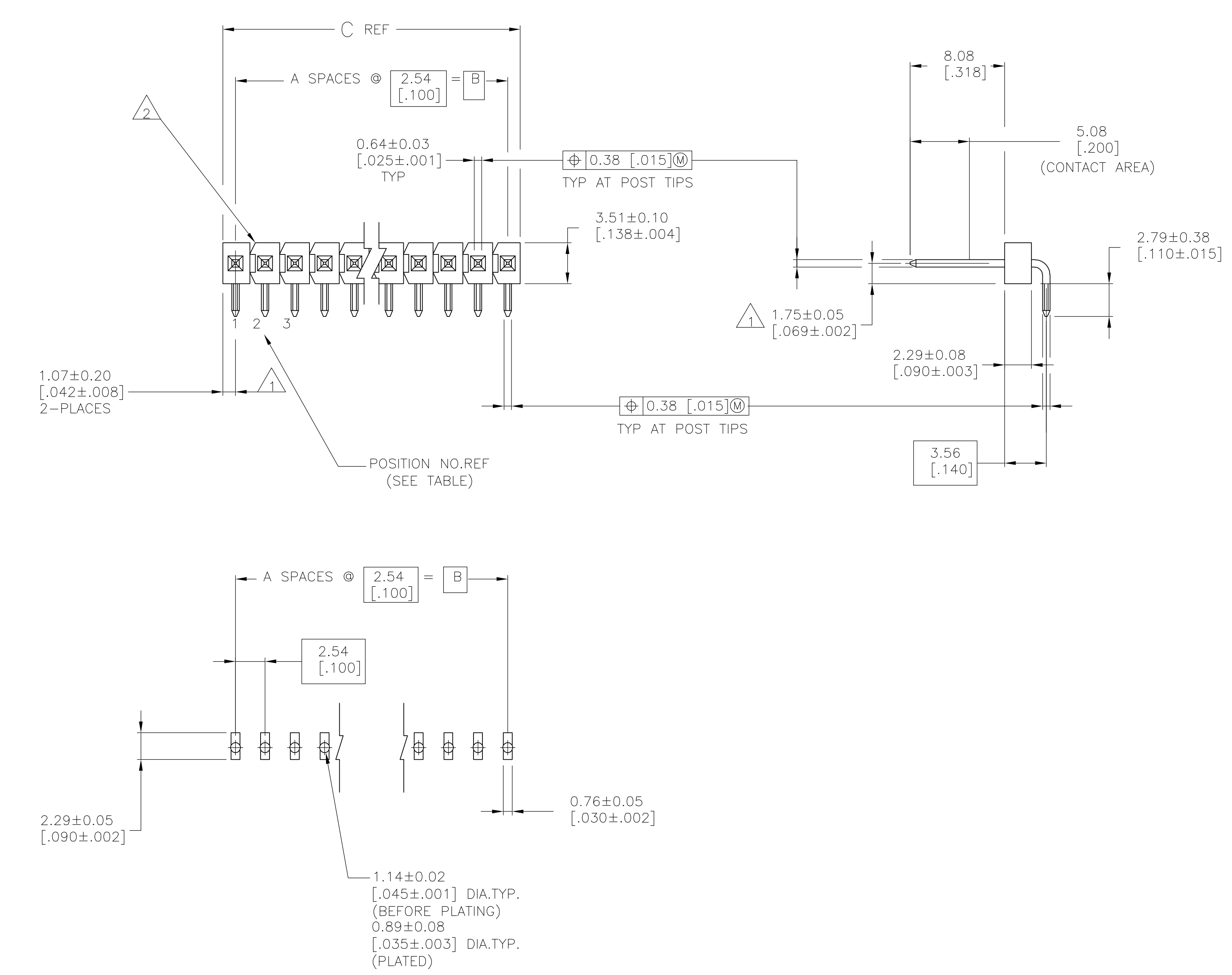


- 1 THE NOTED DIMENSIONS APPLY AT THE INTERSECTION OF THE POST AND HOUSING.
- 2 BREAKAWAY NOTCH ANGLE CAN BE ORIENTED TO THE RIGHT (AS SHOWN) OR TO THE LEFT
- 3 0.000762 [.000030] GOLD ON CONTACT AREA, 0.00254-0.00508 [.000100-.000200] MATTE TIN-LEAD ON SOLDER TAIL, ALL OVER 0.00127 [.000050] NICKEL.
- 4 HOUSING: GLASS FILLED THERMOPLASTIC, COLOR, BLACK. (WILL WITHSTAND VAPOR PHASE REFLOW.)
- 5 0.000762 [.000030] GOLD ON CONTACT AREA, 0.00254-0.00508 [.000100-.000200] MATTE TIN ON SOLDER TAIL, ALL OVER 0.00127 [.000050] NICKEL.



RECOMMENDED PC BOARD MOUNTING DIMENSIONS FOR .063 [1.60] THICK PC BOARD AND .012 [.305] STENCIL THICK.

PLATING	C	B	A	NO. OF POSITIONS	PART NUMBER
3	101.19 [3.984]	99.06 [3.900]		39	4-146305-0
3	98.65 [3.884]	96.52 [3.800]		38	3-146305-9
3	96.11 [3.784]	93.98 [3.700]		37	3-146305-8
3	93.57 [3.684]	91.44 [3.600]		36	3-146305-7
3	91.03 [3.584]	88.90 [3.500]		35	3-146305-6
3	88.49 [3.484]	86.36 [3.400]		34	3-146305-5
3	85.95 [3.384]	83.82 [3.300]		33	3-146305-4
3	83.41 [3.284]	81.28 [3.200]		32	3-146305-3
3	80.87 [3.184]	78.74 [3.100]		31	3-146305-2
3	78.33 [2.984]	76.20 [2.900]		30	3-146305-1
3	75.79 [2.884]	73.66 [2.900]		29	3-146305-0
3	73.25 [2.884]	71.12 [2.800]		28	2-146305-9
3	70.71 [2.784]	68.58 [2.700]		27	2-146305-8
3	68.17 [2.684]	66.04 [2.600]		26	2-146305-7
3	65.63 [2.584]	63.5 [2.500]		25	2-146305-6
3	63.09 [2.484]	60.96 [2.400]		24	2-146305-5
3	60.55 [2.384]	58.42 [2.300]		23	2-146305-4
3	58.01 [2.284]	55.88 [2.200]		22	2-146305-3
3	55.47 [2.184]	53.34 [2.100]		21	2-146305-2
3	52.93 [2.084]	50.80 [2.000]		20	2-146305-1
3	50.39 [1.984]	48.26 [1.900]		19	2-146305-0
3	47.85 [1.884]	45.72 [1.800]		18	1-146305-9
3	45.31 [1.784]	43.18 [1.700]		17	1-146305-8
3	42.77 [1.684]	40.64 [1.600]		16	1-146305-7
3	40.23 [1.584]	38.10 [1.500]		15	1-146305-6
3	37.69 [1.484]	35.56 [1.400]		14	1-146305-5
3	35.15 [1.384]	33.02 [1.300]		13	1-146305-4
3	32.61 [1.284]	30.48 [1.200]		12	1-146305-3
3	30.07 [1.184]	27.94 [1.100]		11	1-146305-2
3	27.53 [1.084]	25.40 [1.000]		10	1-146305-1
3	24.99 [.984]	22.86 [.900]		9	1-146305-0
3	22.45 [.884]	20.32 [.800]		8	146305-9
3	19.91 [.784]	17.78 [.700]		7	146305-8
3	17.37 [.684]	15.24 [.600]		6	146305-7
3	14.83 [.584]	12.70 [.500]		5	146305-6
3	12.29 [.484]	10.16 [.400]		4	146305-5
3	9.75 [.384]	7.62 [.300]		3	146305-4
3	7.21 [.284]	5.08 [.200]		2	146305-3
3	4.67 [.184]	2.54 [.100]		1	146305-2
3	2.13 [.084]	-		0	146305-1

THIS DRAWING IS A CONTROLLED DOCUMENT. DWN T. HOFFMAN 21JUN95

tyco Electronics Tyco Electronics Corporation Harrisburg, Pa 17105-3608

APPO G. DUBNICZKI NAME G. DUBNICZKI

PRODUCT SPEC HEADER ASSEMBLY, MOD II, BREAKAWAY, HIGH TEMPERATURE, RIGHT ANGLE, SINGLE ROW, W/.025 SQUARE POSTS

APPLICATION SPEC

SIZE CAGE CODE DRAWING NO RESTRICTED TO A1 00779 146305

WEIGHT -

CUSTOMER DRAWING SCALE 4:1 SHEET 1 OF 2 REV B

△5	101.19 [3.984]	99.06 [3.900]	39	40	9-146305-0
△5	98.65 [3.884]	96.52 [3.800]	38	39	8-146305-9
△5	96.11 [3.784]	93.98 [3.700]	37	38	8-146305-8
△5	93.57 [3.684]	91.44 [3.600]	36	37	8-146305-7
△5	91.03 [3.584]	88.90 [3.500]	35	36	8-146305-6
△5	88.49 [3.484]	86.36 [3.400]	34	35	8-146305-5
△5	85.95 [3.384]	83.82 [3.300]	33	34	8-146305-4
△5	83.41 [3.284]	81.28 [3.200]	32	33	8-146305-3
△5	80.87 [3.184]	78.74 [3.100]	31	32	8-146305-2
△5	78.33 [3.084]	76.20 [3.000]	30	31	8-146305-1
△5	75.79 [2.984]	73.66 [2.900]	29	30	8-146305-0
△5	73.25 [2.884]	71.12 [2.800]	28	29	7-146305-9
△5	70.71 [2.784]	68.58 [2.700]	27	28	7-146305-8
△5	68.17 [2.684]	66.04 [2.600]	26	27	7-146305-7
△5	65.63 [2.584]	63.5 [2.500]	25	26	7-146305-6
△5	63.09 [2.484]	60.96 [2.400]	24	25	7-146305-5
△5	60.55 [2.384]	58.42 [2.300]	23	24	7-146305-4
△5	58.01 [2.284]	55.88 [2.200]	22	23	7-146305-3
△5	55.47 [2.184]	53.34 [2.100]	21	22	7-146305-2
△5	52.93 [2.084]	50.80 [2.000]	20	21	7-146305-1
△5	50.39 [1.984]	48.26 [1.900]	19	20	7-146305-0
△5	47.85 [1.884]	45.72 [1.800]	18	19	6-146305-9
△5	45.31 [1.784]	43.18 [1.700]	17	18	6-146305-8
△5	42.77 [1.684]	40.64 [1.600]	16	17	6-146305-7
△5	40.23 [1.584]	38.10 [1.500]	15	16	6-146305-6
△5	37.69 [1.484]	35.56 [1.400]	14	15	6-146305-5
△5	35.15 [1.384]	33.02 [1.300]	13	14	6-146305-4
△5	32.61 [1.284]	30.48 [1.200]	12	13	6-146305-3
△5	30.07 [1.184]	27.94 [1.100]	11	12	6-146305-2
△5	27.53 [1.084]	25.40 [1.000]	10	11	6-146305-1
△5	24.99 [.984]	22.86 [.900]	9	10	6-146305-0
△5	22.45 [.884]	20.32 [.800]	8	9	5-146305-9
△5	19.91 [.784]	17.78 [.700]	7	8	5-146305-8
△5	17.37 [.684]	15.24 [.600]	6	7	5-146305-7
△5	14.83 [.584]	12.70 [.500]	5	6	5-146305-6
△5	12.29 [.484]	10.16 [.400]	4	5	5-146305-5
△5	9.75 [.384]	7.62 [.300]	3	4	5-146305-4
△5	7.21 [.284]	5.08 [.200]	2	3	5-146305-3
△5	4.67 [.184]	2.54 [.100]	1	2	5-146305-2
△5	2.13 [.084]	[-]	0	1	5-146305-1
PLATING	C	B	A	NO. OF POSITIONS	PART NUMBER

THIS DRAWING IS A CONTROLLED DOCUMENT.		DIN T. HOFFMAN 21JUN95	Tyco Electronics Corporation Harrisburg, Pa 17105-3608	
DIMENSIONS: mm [INCHES]		CHK G. DUBNICZKI	NAME G. DUBNICZKI	
TOLERANCES UNLESS OTHERWISE SPECIFIED:		APVD G. DUBNICZKI	PRODUCT SPEC	
0 PLC ± -	1 PLC ± -	APPLICATION SPEC		
2 PLC ± 0.51(.02)	3 PLC ± 0.127(.005)	SIZE A1	CAGE CODE 00779	DRAWING NO 146305
4 PLC ± 0.0127(.0005)	ANGLES ± -	WEIGHT -	RESTRICTED TO	
MATERIAL △4	FINISH SEE TABLE	CUSTOMER DRAWING	SCALE 1:1	SHEET 2 OF 2